

# A MODERNIZED OFFICE SHOWROOM

CASE STUDY



## PROJECT SUMMARY

National Solutions, a long-standing tenant at Hanley Pointe since 1996, sought to renew their lease but with a new vision. They aimed to transform their office into a refreshed, functional space that better aligned with their business needs—specifically, converting their location into a more effective showroom.

Given Hanley Pointe's strategic central location, National Solutions wanted an updated, visually appealing space to better showcase their products and services to clients.



ADDRESS | 2001 S. Hanley Road,  
St. Louis, MO 63144



PROJECT TYPE | Office Park



SQUARE FOOTAGE | 1,600 SF



INVESTMENT CONSULTANT | Intelica



BROKERAGE | Intelica



PROPERTY MANAGEMENT | Intelica



## SOLUTION

### A Modernized Showroom for National Solutions

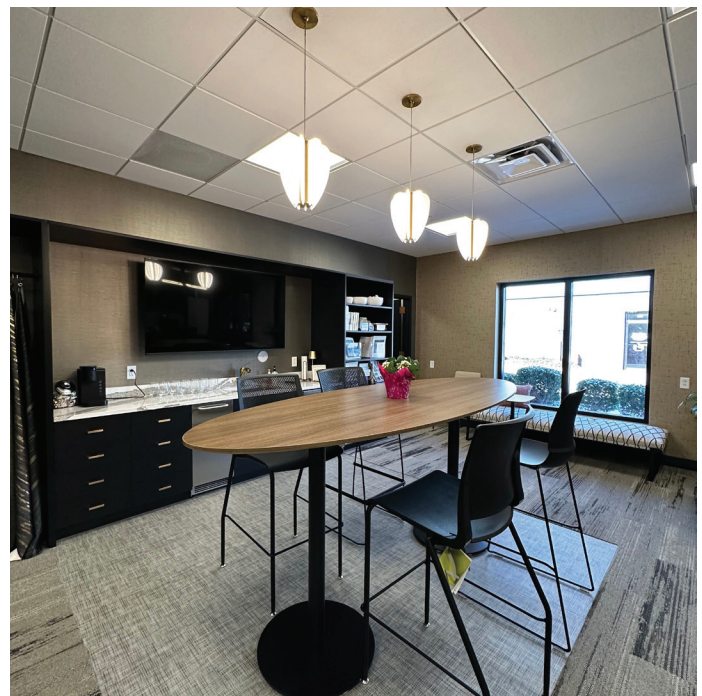
By aligning leasing, design, and construction expertise, Artori Group and its partners successfully delivered a refreshed workspace that meets the evolving needs of a long-term tenant while adding value to the property. The transformation of National Solutions' space at Hanley Pointe exemplifies the power of integrated real estate solutions.



## INTEGRATED REAL ESTATE SOLUTIONS

- Successfully renewed National Solutions' lease, reinforcing a relationship spanning nearly three decades.
- Designed and built a modern, showroom-style office that optimizes space for product display and client interactions.
- Enhanced the overall tenant experience at Hanley Pointe through refreshed interior finishes and functional enhancements.
- Strengthened collaboration between ownership, leasing, design, and construction teams, showcasing Artori Group's ability to deliver full-service solutions.

This project highlights our commitment to strategic partnerships and results-driven execution, ensuring that tenants can thrive in spaces tailored to their business vision.



**Drew Clary**

Principal  
(314) 744-8978  
dclary@intcre.com



**Ericka Seidel**

Senior Associate | Brokerage  
(314) 971-0750  
eseidel@intcre.com